

RA

RA Series Aluminum Electro

Feature

- * : 105 10000
Load life:105 10000 hours.
- *
High ripple current, extreme long
- * RoHS
Compliant to the RoHS Directive

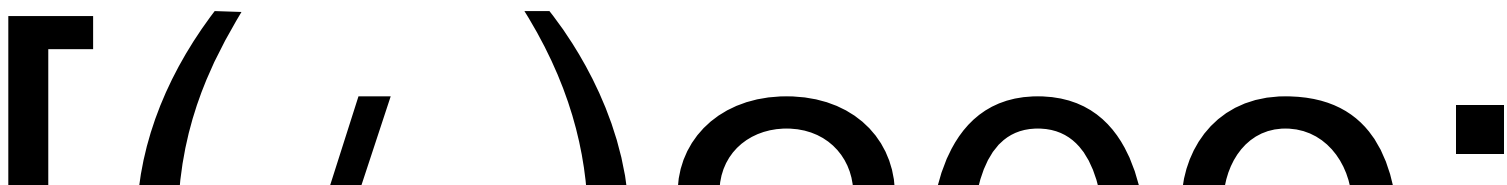
Application

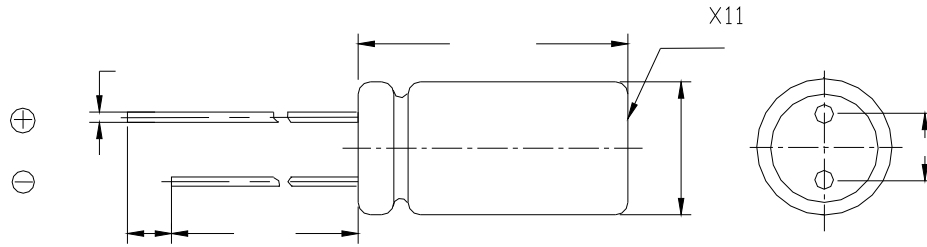
- * LED
Ideally designed for all kinds of

Part Number

8 2 2 0 L F

Code	Voltage
LO	4
LA	6.3
LB	10
LC	16
LD	25
LE	35
LF	50
LG	63
MA	100



Product Structure


(mm)	±0.5			±1.0				
D(mm)	5	6.3	8	10	12.5	16	18	22
F±0.5(mm)	2.	2.5	3.5	5.0		7.5		10.0
d±0.1(mm)	0.5		0.6			0.8		
L(mm)	11,12	12,16	12,16,	16,20,25	16,20,25,30,35	20,25,30,35,40	25,30,35,40	
	L±2.0							

Main specifications

Item	Performance Characteristics	
Rated Voltage Range	160~450V.DC	
Operating Temperature Range	-25 ~+105	
Nominal Capacitance Range	1~220 F	
Capacitance Tolerance	±20% M +25 120Hz	
Leakage Current (25)	(V) Rated working voltage	160~450
	Leakage current	2 I 0.03CV+25(A) After 2 min. I 0.03CV+25(A)
C μF Nominal Capacitance in μF V V Rated working voltage in V		
DF Dissipation Factor	(V) Rated working voltage	160~450
	DF(MAX) (25 ,120Hz)	0.15
1000μF 1000μF DF 0.02		
For capacitance of more than 1000μF,add 0.02 for every increase of 1000μF.		

Surge Voltage	(V) Rated working voltage	160	200	250	350	400	450
	(V) Surge voltage	200	250	300	400	450	500
Temperature Stability	(V) Rated working voltage	160~250		350~450			
	(120Hz) Impedance Ratio	z-25 /z+25		3		6	

+105

10000

After application of rated working voltage with max permissible ripple current specified at +105 for 10000hours, capacitors meet the characteristics requirements measured at +20 listed at below:

Load life 1 :±25

Dimensions and ripple current

WV/V Cap/μF	160		200		250		350		400		450	
	(1)	(2)	(1)	(2)	(1)	(2)	(1)	(2)	(1)	(2)	(1)	(2)
1.0									8×12 10×12	40 50	8×12	72
1.5									8×12 8×16	50 60	8×14	85
1.8									8×12 10×12	60 70	8×12	90
2.2					8×10	80	8×10	78	8×16 10×12	80 80	10×12	130
2.8					8×12	90	8×12	90	8×16	90	10×16	150
3.3					8×12	100	8×12	100	8×16 10×16	80 100	10×16	160
4.0					8×12	120	8×12	120	10×20	150	8×16 10×16	128 220
4.7					6.3×12 8×12	140 100	8×12	130	8×12 10×16	90 110	10×12 10×16,20	180 200
6.8					8×12 10×16	150 180	10×16	220	10×16 10×20	220 220	10×14 10×20	220 250
8.2	8×12	110	8×16	230	8×16	150	10×16	250	10×20	250	10×20	250
10	6.3×9 8×12	230 250	8×12 10×16	180 250	8×16 10×12	230 230	10×20	280	10×20 12.5×20	280 280	10×20 12.5×20	300 300
15	8×16	250	10×16	280	10×16 12.5×20	250 450	10×20	300	10×16 10×20	250 290	12.5×20	300
22	10×20	500	10×20	500	10×20 12.5×20	480 600	12					

Packaging

*

Taped packaging quantity

D	Qty. (Pcs)	L() 22mm	L()
---	------------	-----------	------